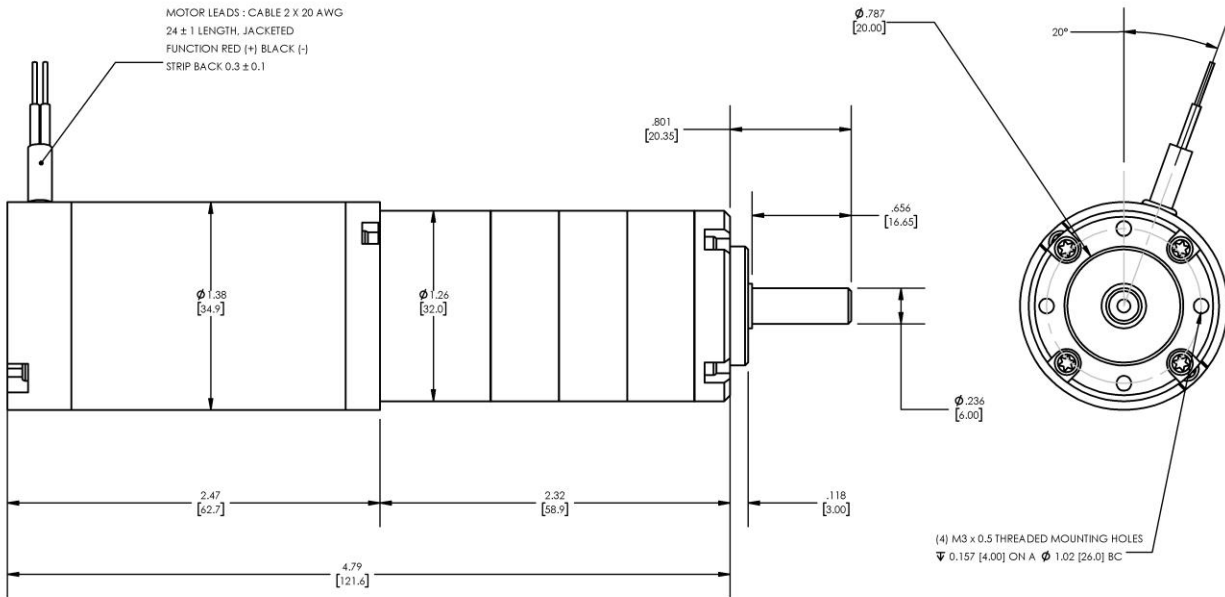


**Model Number:**
**MMP S14-247H-36V GP32-169**


DIMENSIONS ARE INCHES [MM] UNLESS OTHERWISE STATED

PLANETARY GEARMOTOR OUTPUT PARAMETERS:	VALUE	UNITS	TOLERANCE
Gearhead Ratio (exact)	168.84 : 1		
Gearhead Shaft Output Speed (at full-load)	30	RPM	MAX
Gearmotor Rated Continuous Torque	39	In-Lbs	MAX
Gearmotor Rated Peak Torque	<b>80++</b>	In-Lbs	----
Gearhead Standard Backlash	96	Arc Minutes	MAX
Gearhead Efficiency	70%	----	----
Output Shaft Radial Load Capacity	23	Lbs	MAX
Output Shaft Axial Load Capacity	7	Lbs	MAX
Gearmotor Total Weight	1.2	Lbs	MAX

**++ All Peak Torque values are dependent upon duty. Contact our sales office for details.**

DC MOTOR PERFORMANCE PARAMETERS:	VALUE	UNITS	TOLERANCE
Rated DC Voltage	36	DC VOLTS	----
Rated Continuous Current	1.1	AMPERES	----
No-Load Speed	6923	RPM	MAX
Rated Speed	5125	RPM	+/- 15%
Rated Continuous Power Out	20	WATTS	+/- 15%
Rated Continuous Torque	5.3	OZ-IN	----
Peak Torque (motor only)	19	OZ-IN	----
No-Load Current	0.30	AMPERES	MAX
Back EMF Constant (Ke)	5.2	V/KRPM	+/- 10%
Torque Constant (Kt)	7.0	OZ-IN/AMP	+/- 10%
DC Armature Resistance	8.81	OHMS	+/- 15%
Armature Inductance	1.00	mH	+/- 15%
Armature temperature	155	DEG. C	MAX

**NOTES:**

- ENCODER & BRAKE OPTIONS AVAILABLE – [FOLLOW THIS LINK FOR DETAILS](#)
- NEMA MOUNTING FLANGE OPTION AVAILABLE – [FOLLOW THIS LINK FOR DETAILS](#)

# MIDWEST MOTION PRODUCTS, INC

## DESIGN, MANUFACTURING & DISTRIBUTION - MOTION CONTROL EQUIPMENT

[www.midwestmotion.com](http://www.midwestmotion.com)

email: [sales@midwestmotion.com](mailto:sales@midwestmotion.com)